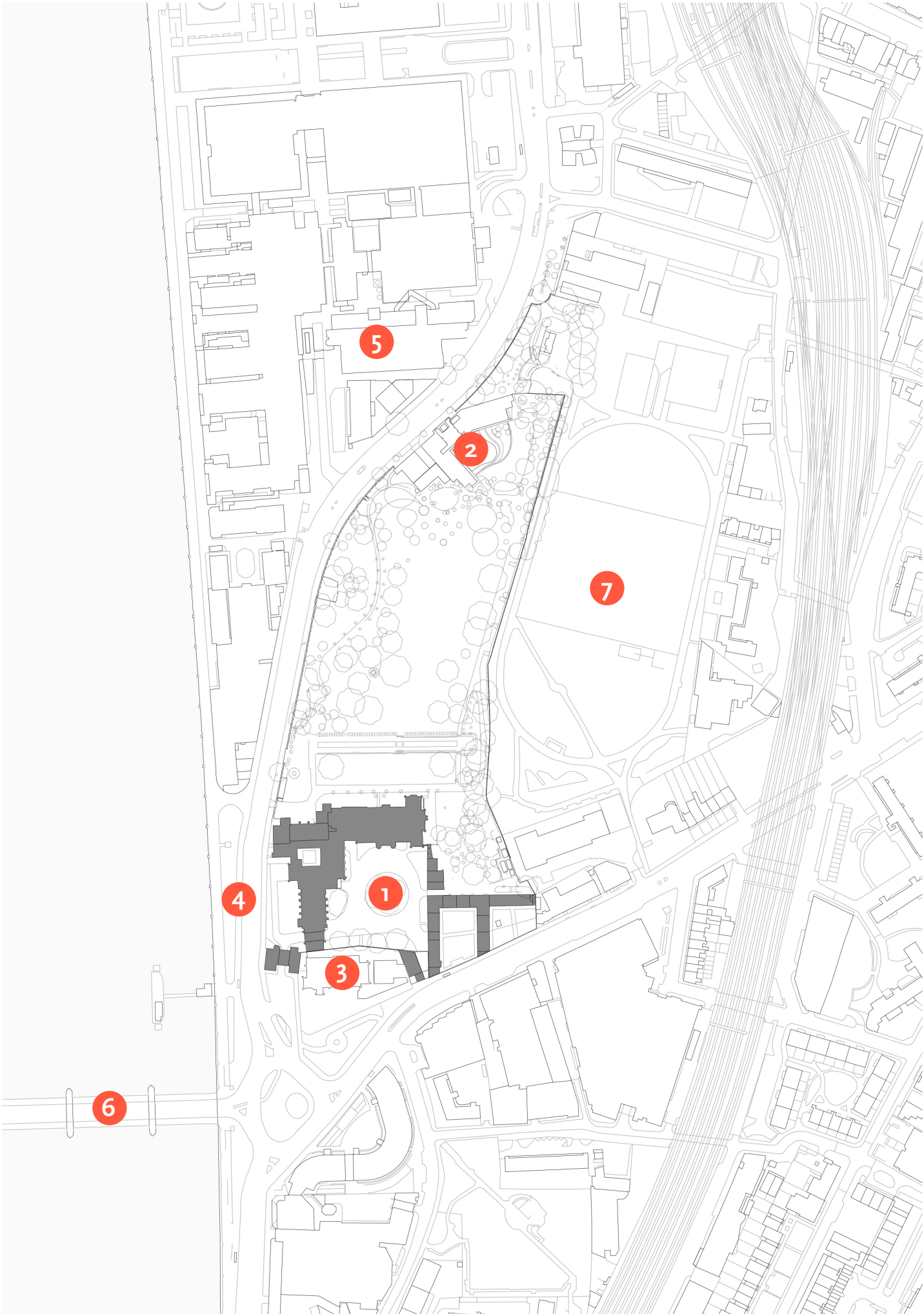


Site Plan

Key

- 1 Lambeth Palace
- 2 Lambeth Palace Library
- 3 Garden Museum
- 4 Albert Embankment
- 5 Evelina London Children's Hospital
- 6 Lambeth Bridge
- 7 Archbishop's Park



Site Plan (clean)



Site Plan



Key

- 1 Lambeth Palace
- 2 Lambeth Palace Library
- 3 Garden Museum
- 4 Albert Embankment
- 5 Evelina London Children's Hospital
- 6 Lambeth Bridge
- 7 Archbishop's Park
- 8 Palaces of Westminster



Site Plan (Clean)



Site Plan (colour)



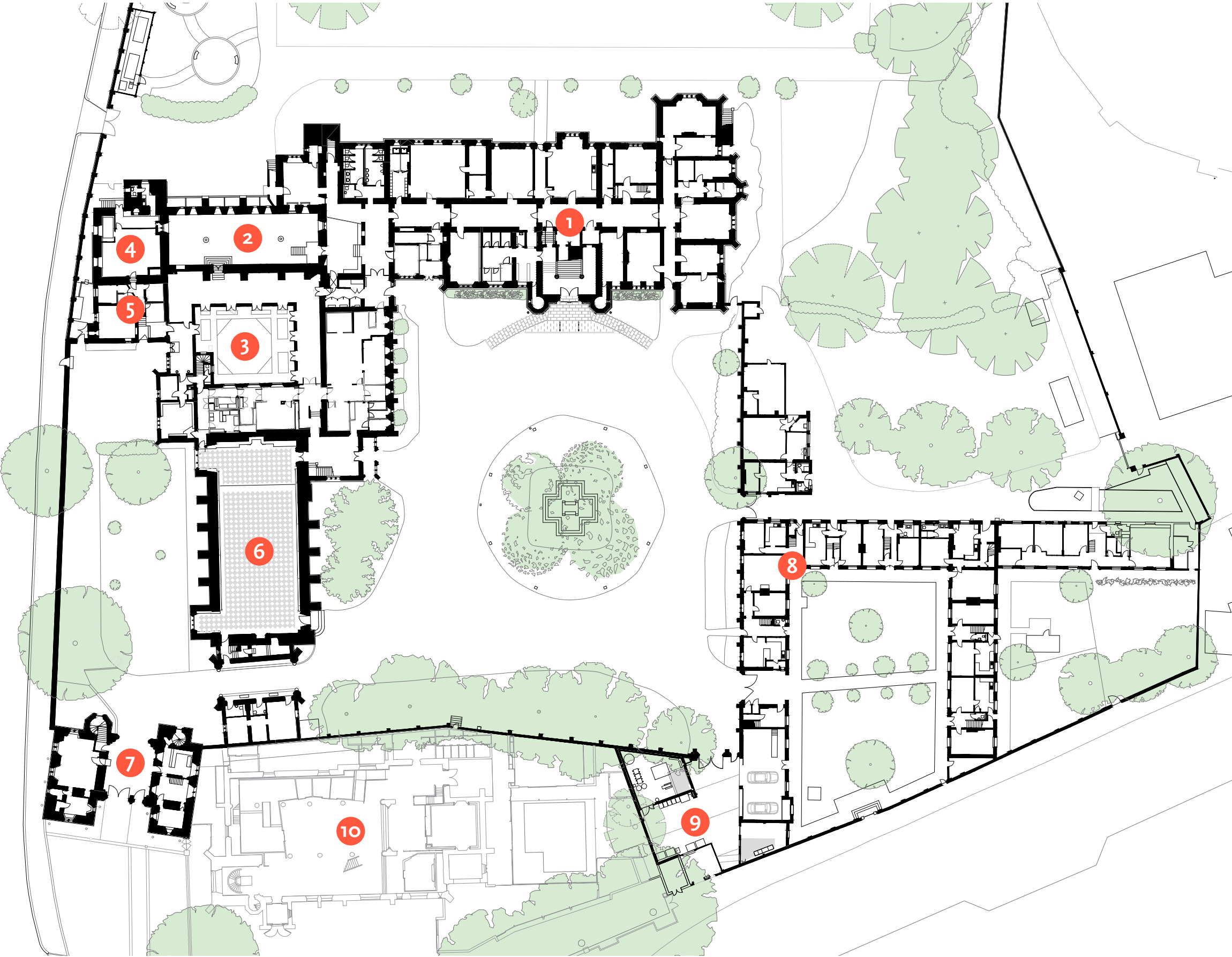
Key

- 1 Lambeth Palace
- 2 Lambeth Palace Library
- 3 Garden Museum
- 4 Albert Embankment
- 5 Evelina London Children's Hospital
- 6 Lambeth Bridge
- 7 Archbishop's Park
- 8 Palaces of Westminster

Site Plan (colour, clean)



Ground Floor

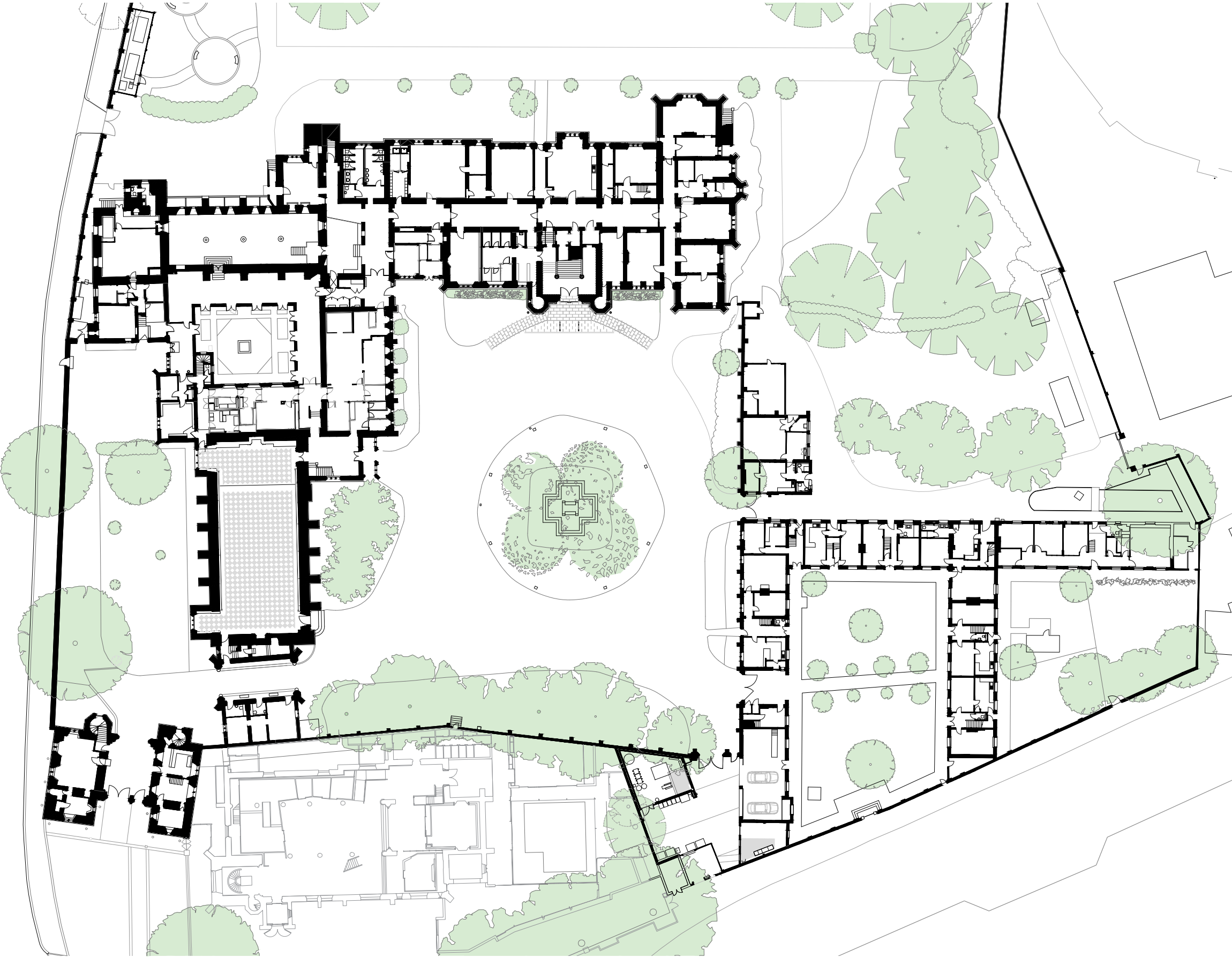


Key

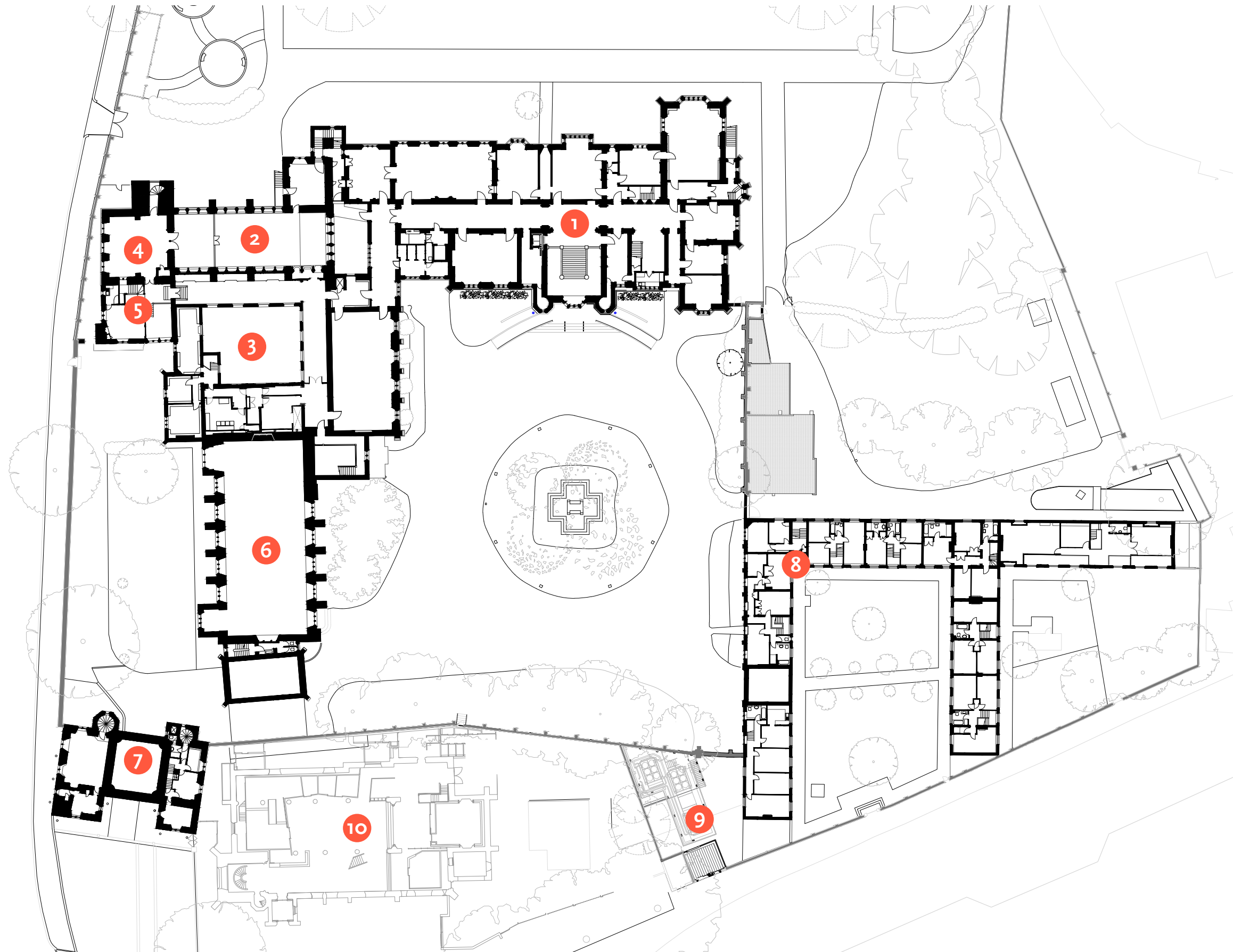
- 1 Blore Building
- 2 Chapel
- 3 Cloisters
- 4 Lollards' Tower
- 5 Laud's Tower
- 6 Great Hall
- 7 Morton's Tower
- 8 Cottages
- 9 Energy Centre
- 10 Garden Museum



Ground Floor (clean)



First Floor

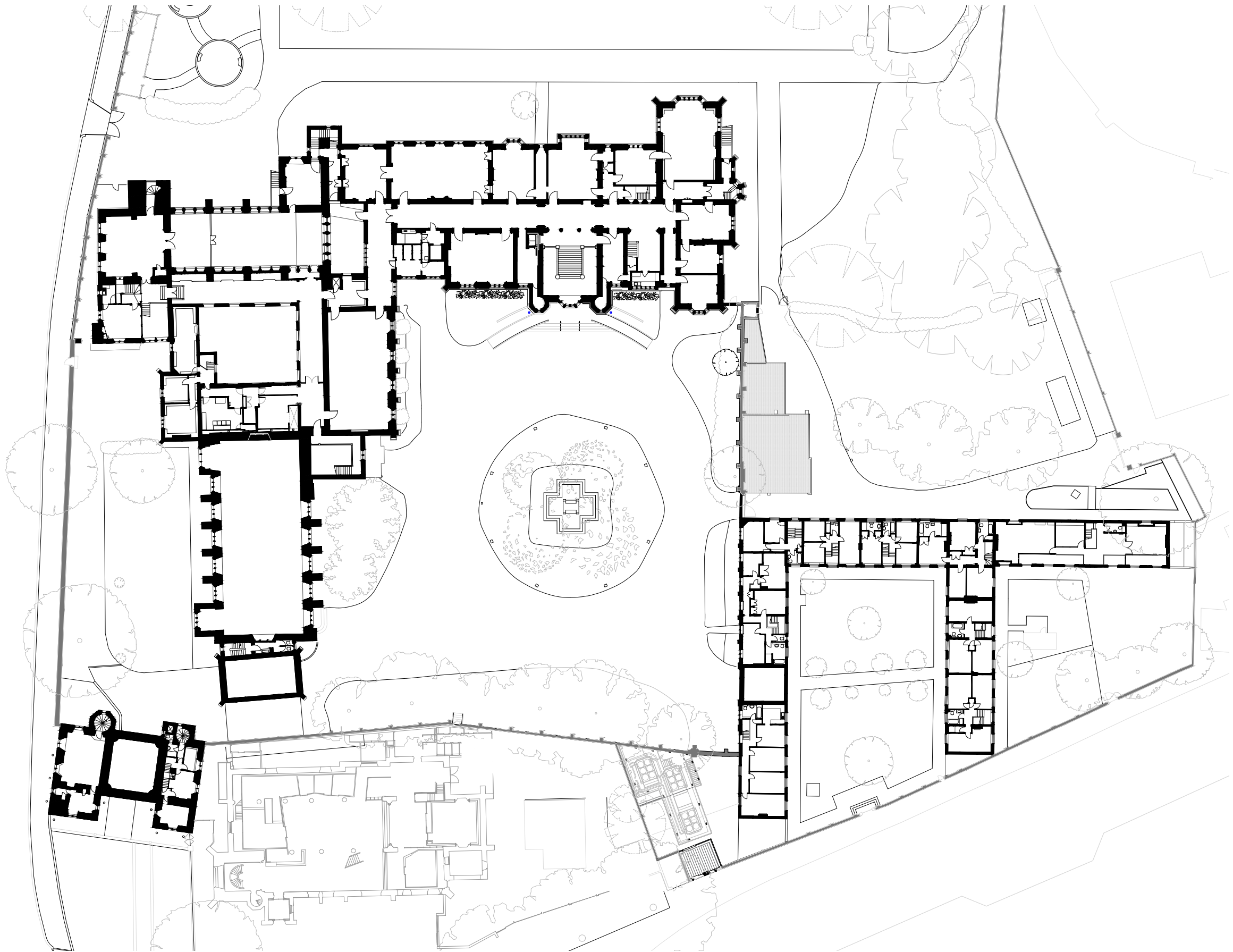


Key

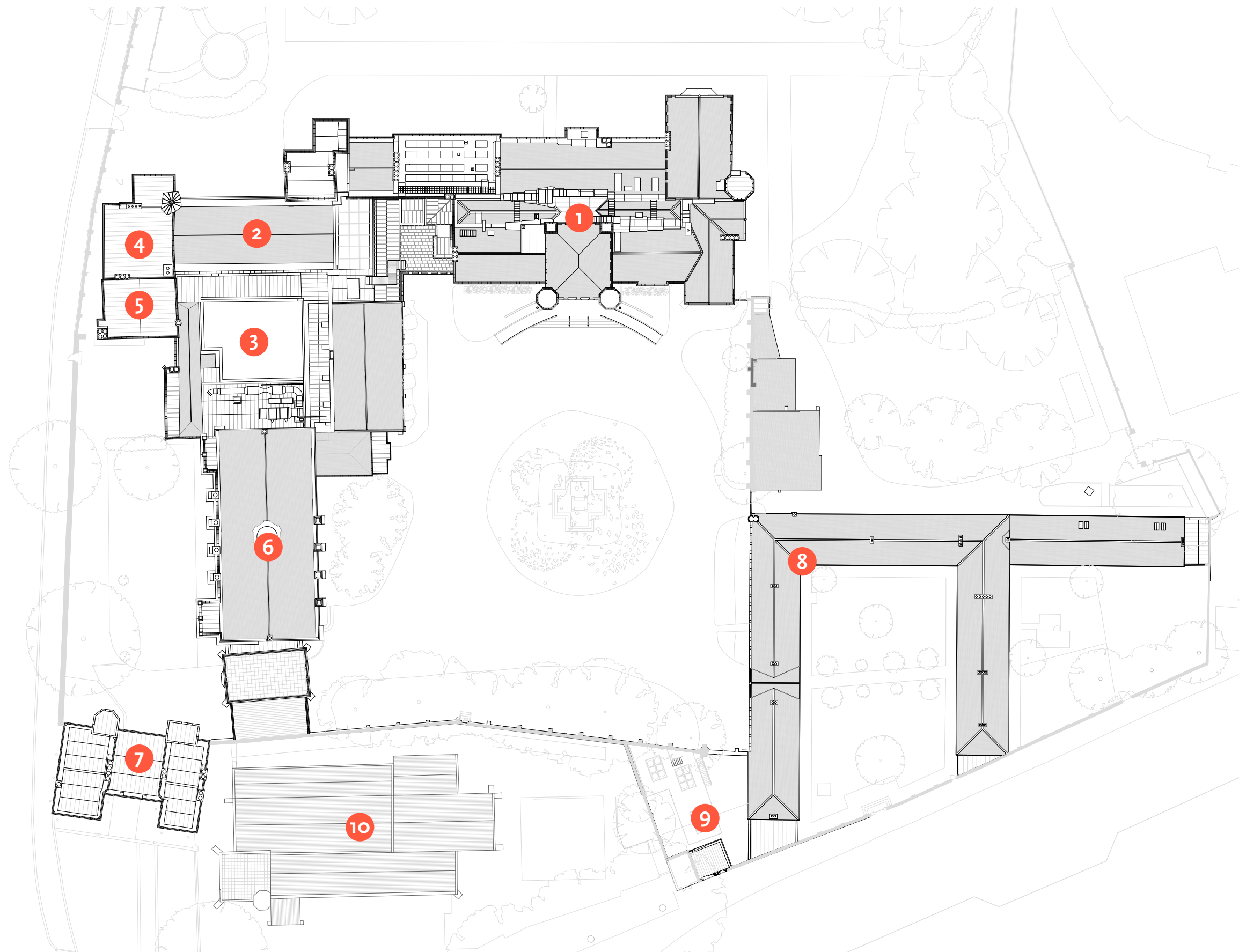
- 1 Blore Building
- 2 Chapel
- 3 Cloisters
- 4 Lollards' Tower
- 5 Laud's Tower
- 6 Great Hall
- 7 Morton's Tower
- 8 Cottages
- 9 Energy Centre
- 10 Garden Museum



First Floor (clean)



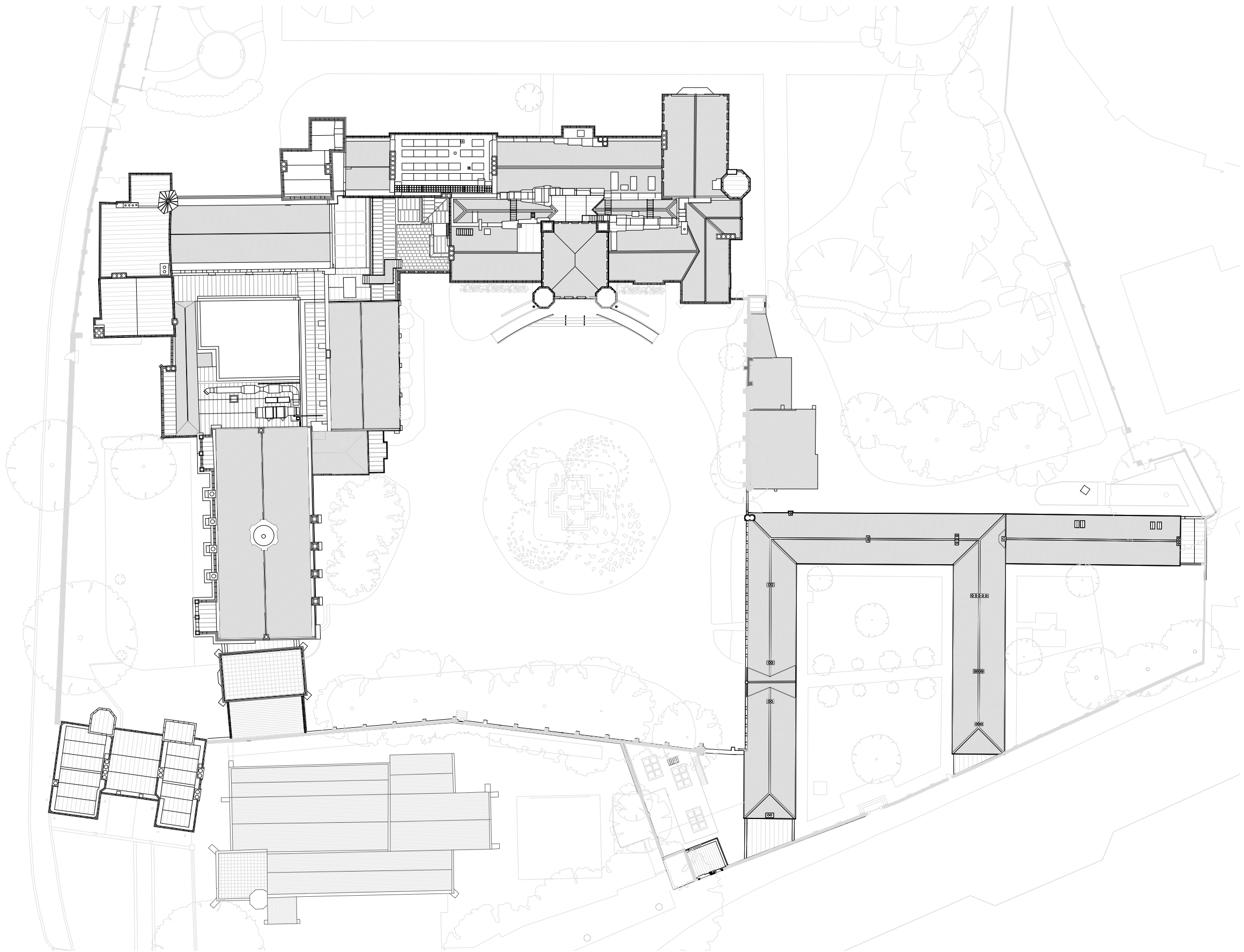
Roof Plan



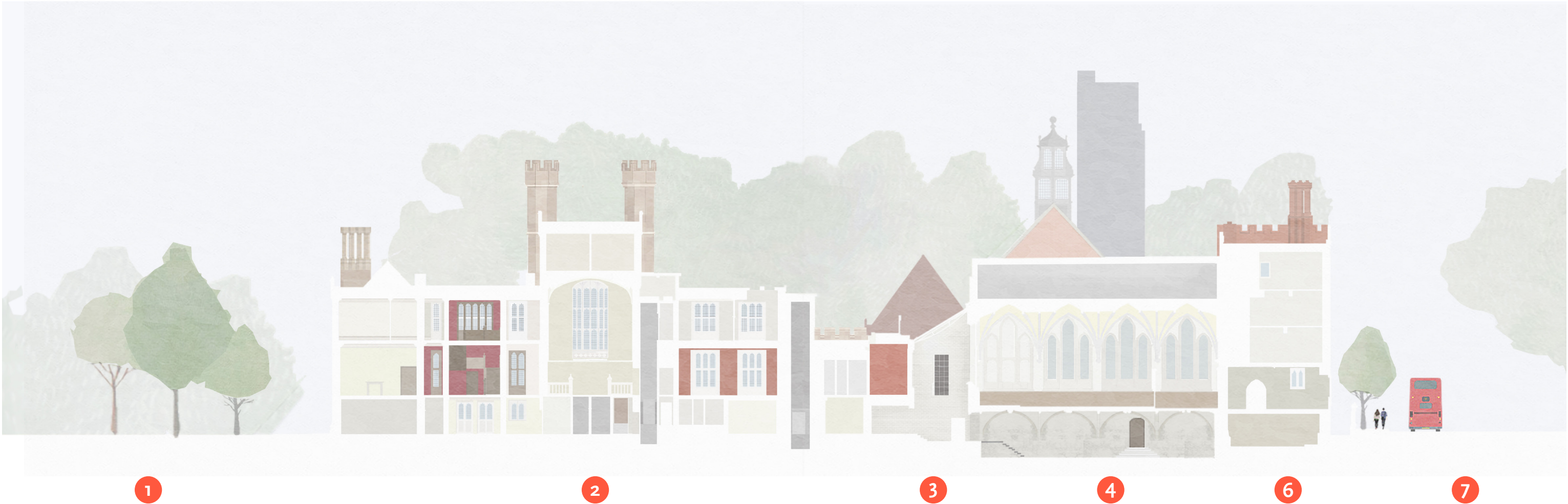
Key

- 1 Blore Building
- 2 Chapel
- 3 Cloisters
- 4 Lollards' Tower
- 5 Laud's Tower
- 6 Great Hall
- 7 Morton's Tower
- 8 Cottages
- 9 Energy Centre
- 10 Garden Museum

Roof Plan (clean)



South Section

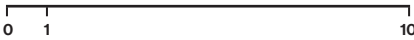


Key

- 1 Garden
- 2 Blore Building
- 3 Atrium
- 4 Chapel
- 5 Crypt
- 6 Lollards' Tower
- 7 Lambeth Palace Road



South Section (Clean)



West Section



- Key**
- 1 Lambeth Road
 - 2 Energy Centre
 - 3 Archway Building
 - 4 Great Hall
 - 5 Main Forecourt
 - 6 Guard Room
 - 7 Blore Building
 - 8 Garden
 - 9 Palace of Westminster



West Section (Clean)



0 1 10

North Section



1

2

3

4

5

6

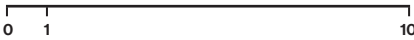
7

Key

- 1 Lambeth Palace Road
- 2 Laud's Tower
- 3 Great Hall
- 4 Guard Room
- 5 Main Forecourt
- 6 Blore Building
- 7 East Garden



North Section (Clean)



East Section



1

2

3

4

5

6

7

8

Key

- 1 Garden
- 2 Lollards' Tower
- 3 Chapel
- 4 Crypt
- 5 Cloister
- 6 Great Hall
- 7 Archway Building
- 8 Garden Museum



East Section (Clean)



0 1 10

Masterplan Axonometric



Masterplan Axonometric (Clean)



Terrace Section



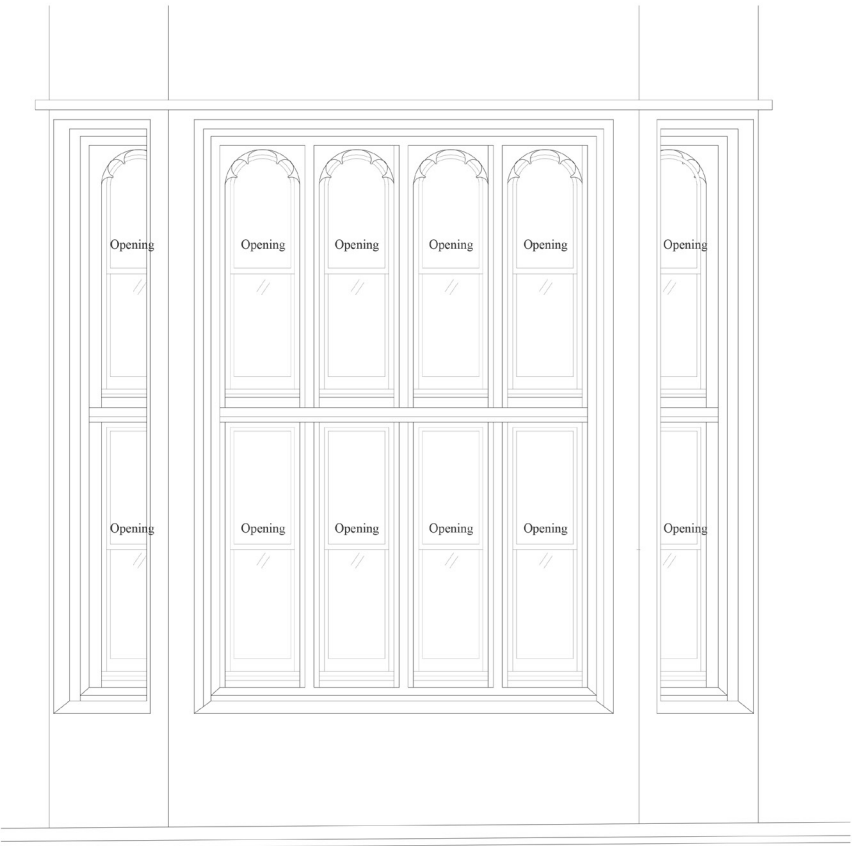
Window details



EXISTING LEADED WINDOW



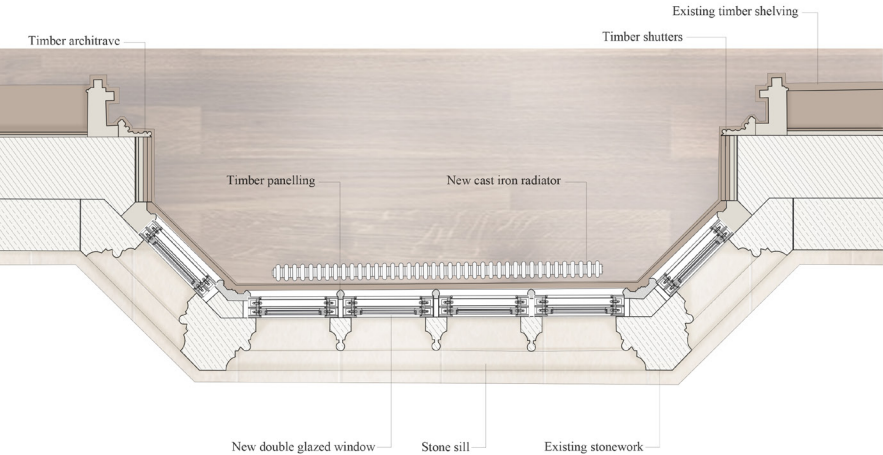
EXISTING LEADED WINDOW AND TIMBER PANELLING



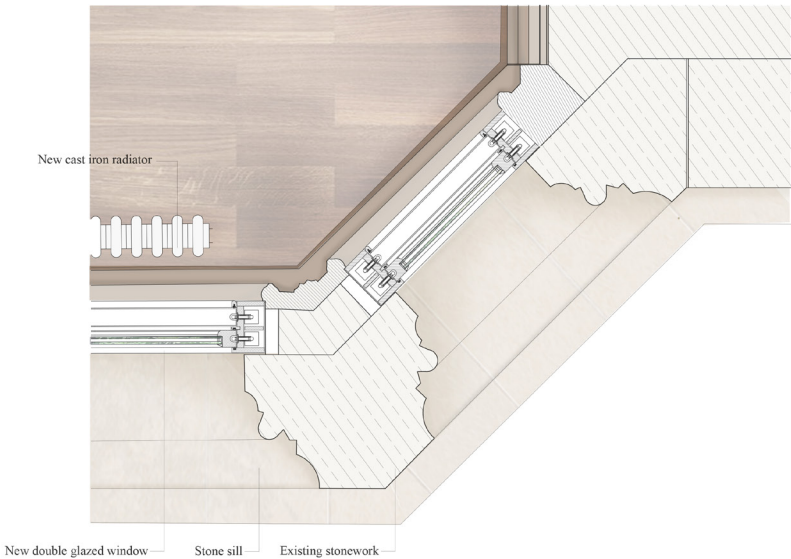
EXTERNAL ELEVATION
1:25



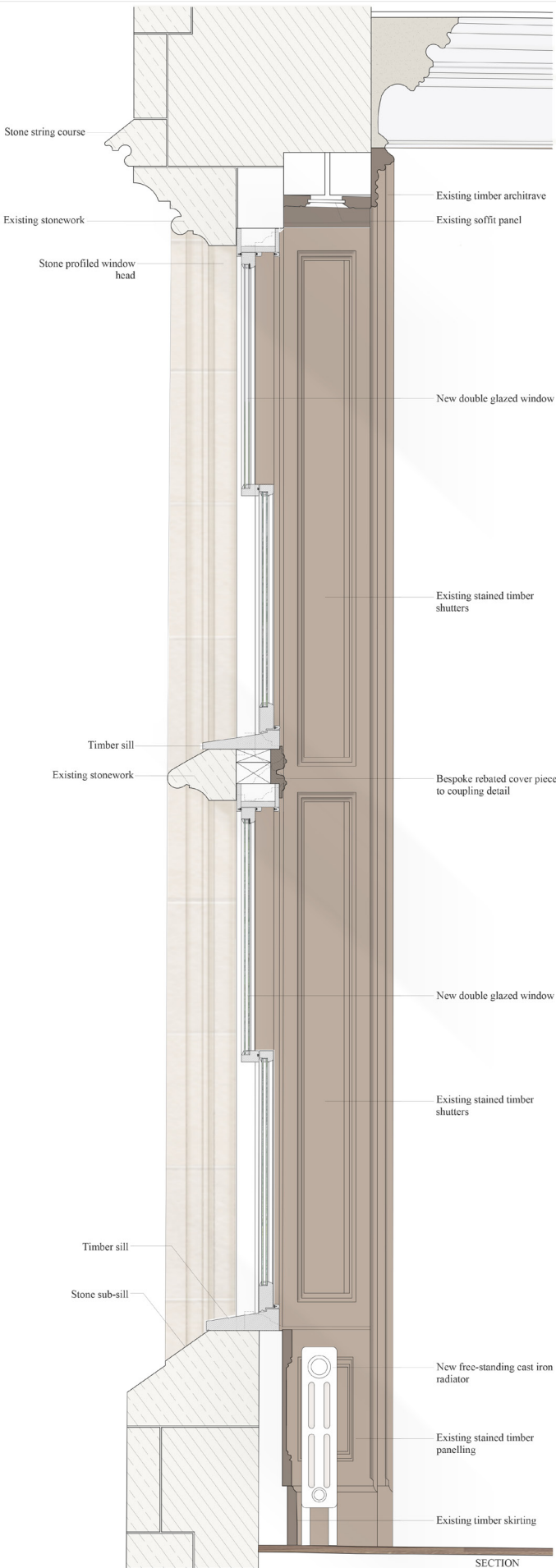
INTERNAL ELEVATION
1:25



PLAN
1:25



PLAN DETAIL
1:10



SECTION
1:10

NOTES:

REVISIONS:

LAMBETH PALACE
MASTERPLAN

WINDOW DETAILS
TYPE M1 PROPOSED

DRAWING NO:
(BB) 544

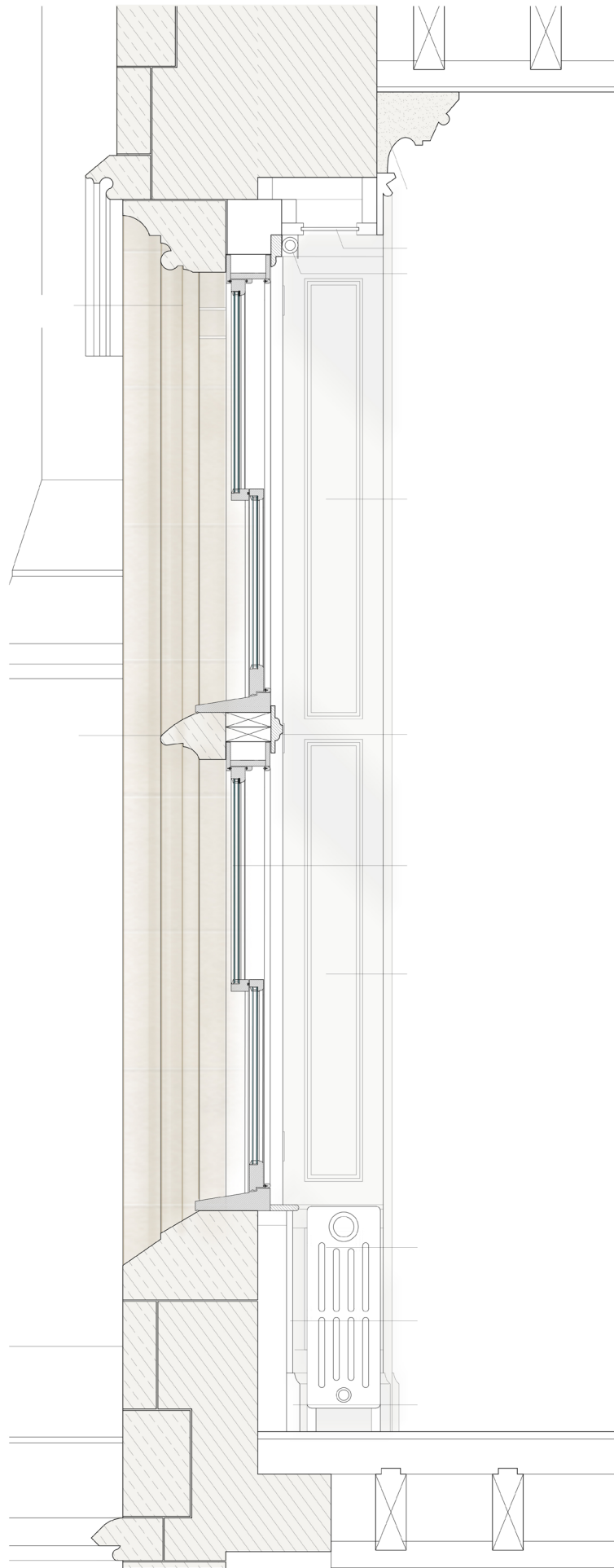
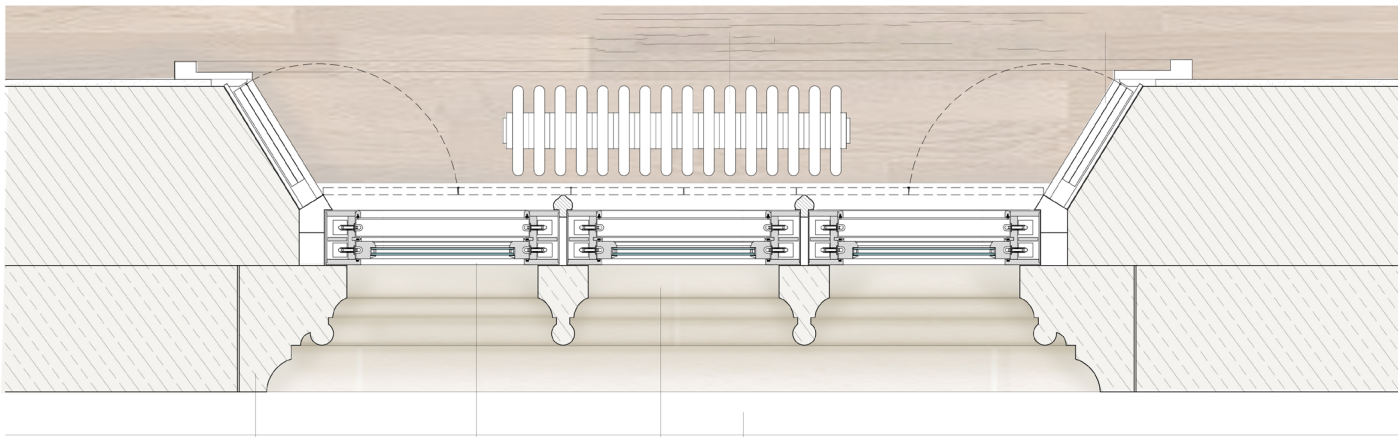
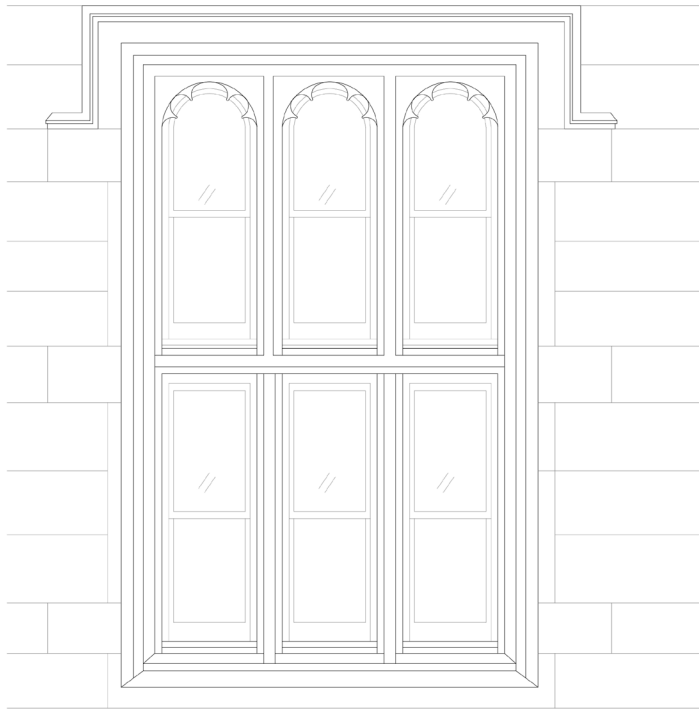
SCALE:
1:10 & 1:20@ A1

DATE:
30.06.2021

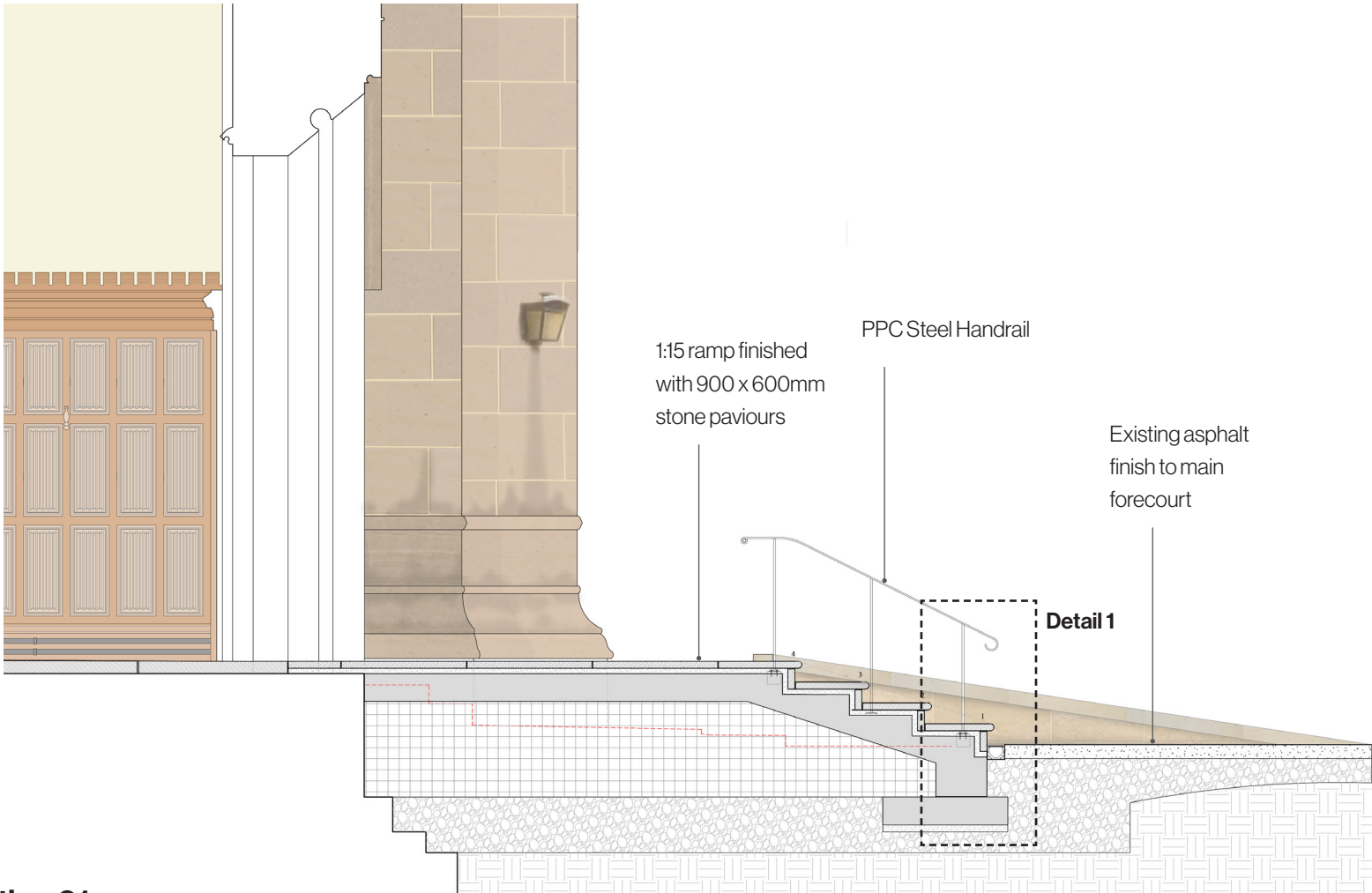
WRIGHT & WRIGHT ARCHITECTS

89/91 Bayham Street
London NW1 0AG
TEL: 020 7428 9393
FAX: 020 7428 9394
www.wrightandwright.co.uk
www.wrightandwright.co.uk

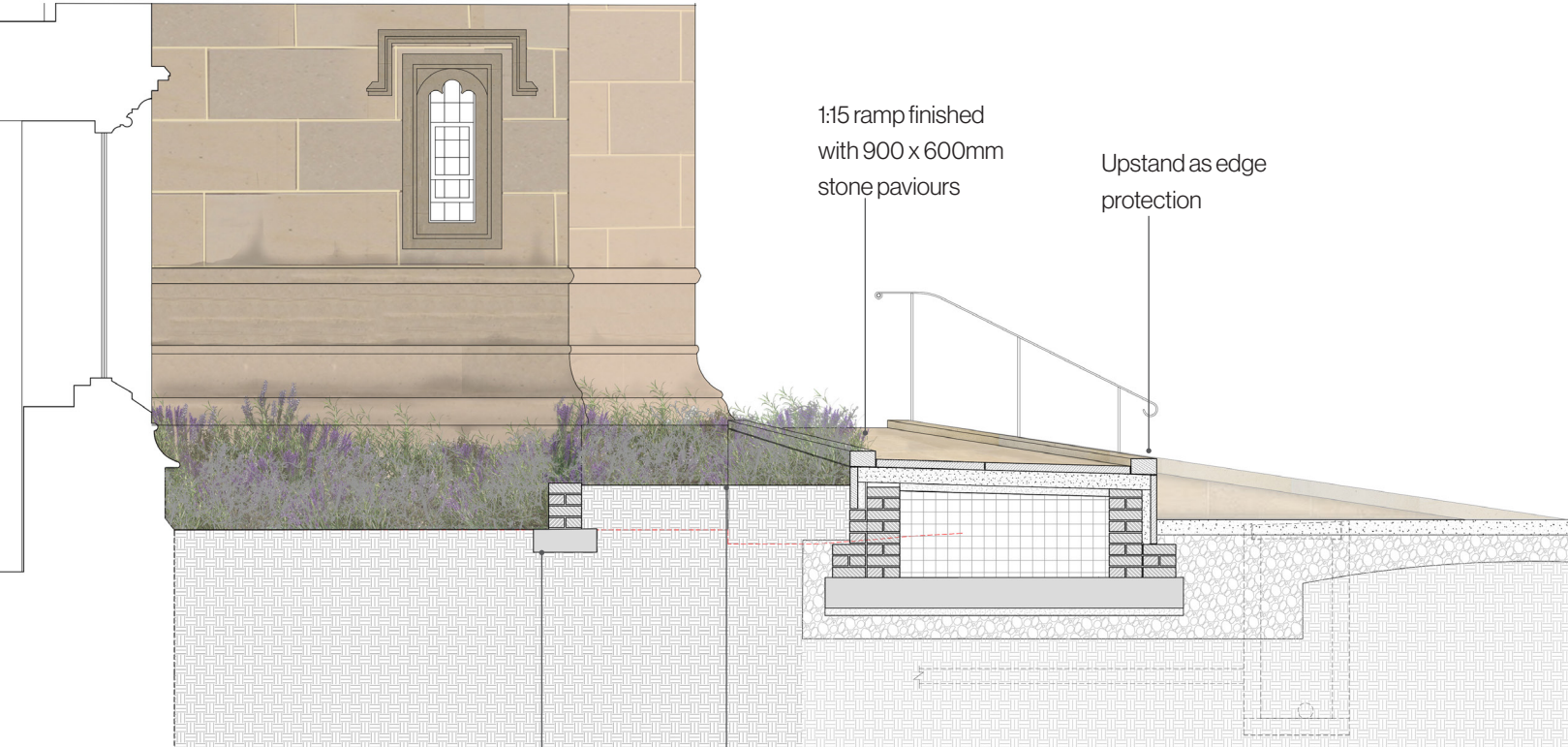
Window details



Blore Building Entrance

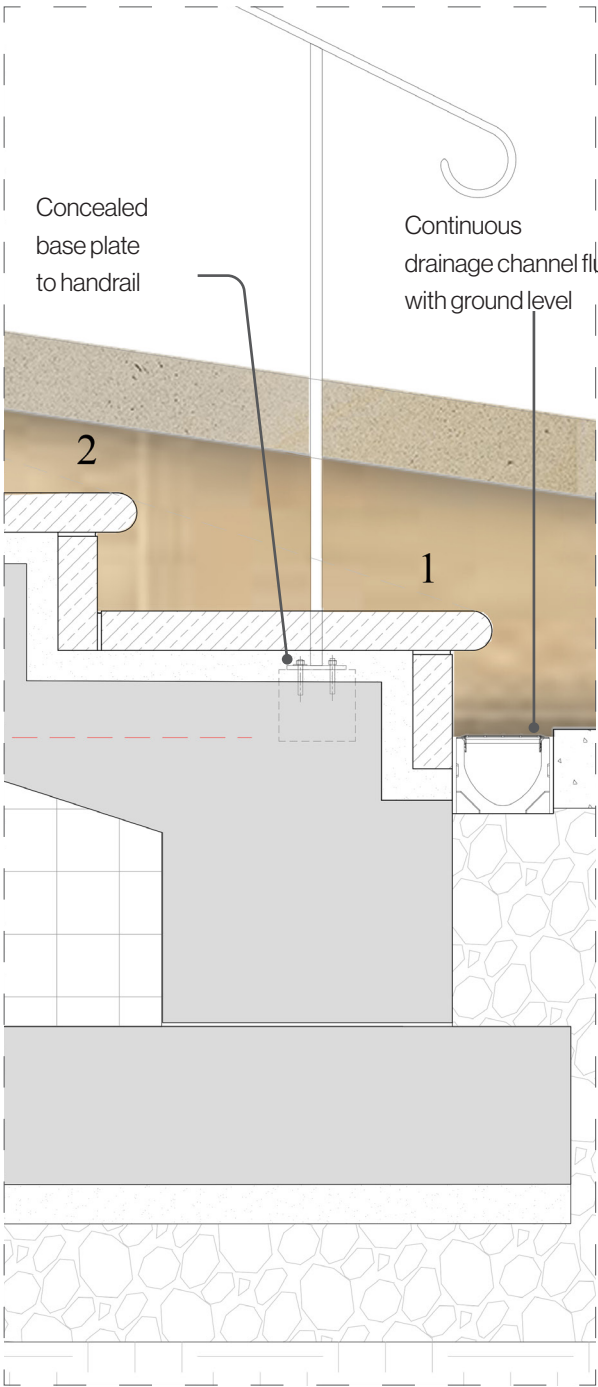


Section 01

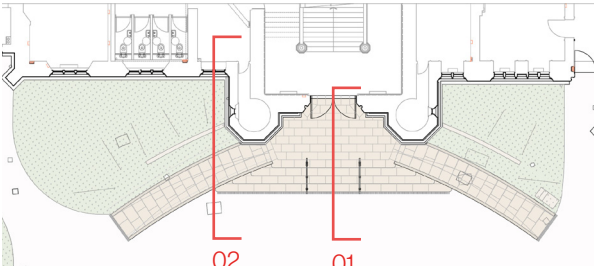


Section 02

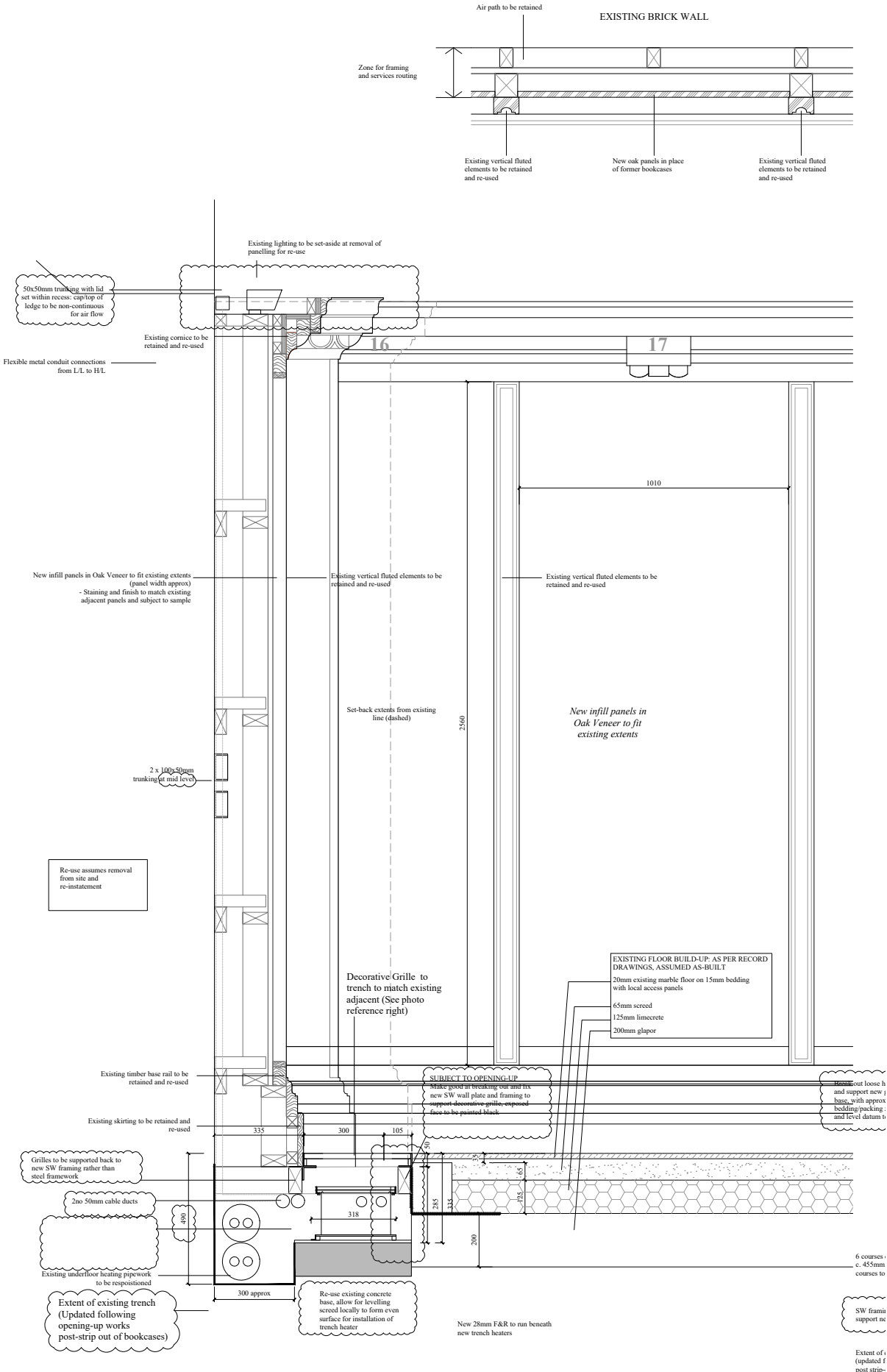
Detail Design Access Ramp to Blore Building



Detail 01



Great Hall detail



TYPICAL SECTION THROUGH WEST PANELLING
1:10